



Windsor Door

America's Choice Since 1964

240 COMMERCIAL DOOR

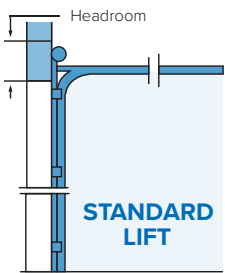


The Model 240 is built to take real world abuse. The 24 gauge, all steel door features primed sections with Tog-L-Loc™ construction, and is guaranteed by an unmatched 5- year warranty. Tough, reliable performance and a wide choice of options make the Model 240 an excellent door for most industrial applications.

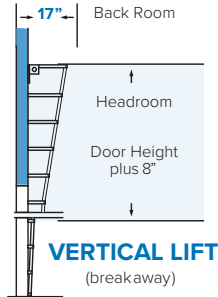
240 COMMERCIAL DOOR

TRACK CLEARANCE SCHEDULE

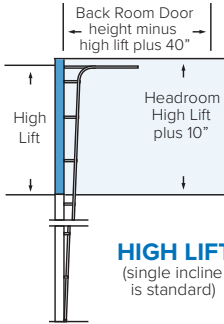
(Measurement from Header to Ceiling)	2" Track	3" Track
Standard Lift: Headroom	16"	19"
Vertical Lift: Door Height Plus	8"	8"
Hi-Lift: Hi-Lift Plus	10"	12"
Sideroom	4"	4 ¾"
Center Post Room	8"	9 ½"



Note: 5/16" fasteners recommended

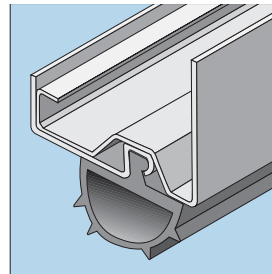


VERTICAL LIFT (breakaway)



HIGH LIFT (single incline is standard)

- 16 gauge galvanized end and intermediate styles
- 2" panel thickness
- Tongue and groove weathertight meeting rails
- Full length bottom PVC weatherstrip
- Prepainted white, 24 gauge steel (white front and back)



FEATURES

- 16 gauge galvanized end and intermediate styles
- 2" panel thickness
- Tongue and groove weathertight meeting rails
- Full length bottom PVC weatherstrip
- Prepainted white, 24 gauge steel (white front and back)
- Hot-dipped galvanized and prepainted white, brown or grey with Ruff-Tex® finish
- Roll formed with integral reinforcing ribs - 6 longitudinal, 2 flat bottom v-grooves
- 16 gauge hot-dipped galvanized steel end and intermediate stiles
- Bottom weatherstrip is standard bulb-type
- Tog-L-Loc™ mechanical fastening system is durable, high-strength and ensures leakproof joints
- Sizes: Widths up to 24'-2", Heights up to 18' Oversize available

COUNTERBALANCE SYSTEM

- Oil-tempered helical-wound torsion springs
- Tubular or solid steel shaft as required
- Cast aluminum cable drums

TRACK & HARDWARE

- Track is 2" or 3" (as required) hot-dipped galvanized steel
- Bracket or angle mount as required
- Vertical track is inclined to assure tight closure at jambs
- Horizontal track is reinforced with galvanized angles as required
- 14 gauge heavy-duty galvanized graduated hinges
- Rollers are steel ball bearing with case hardened races
- Lift cables are aircraft-type galvanized (minimum safety factor 5 to 1)

LOCKS

- Inside friction lock is standard

OPTIONS

- Pass doors (consult factory for sizes)
- Lites: 5" x 24" glass openings
- Fullview aluminum sections
- Locks: 5-pin tumbler cylinder lock; night latch with steel bar engaging track
- High lift and vertical lift
- Jamb, header and joint weatherseals
- Insulation: Polystyrene with gloss liner
- Angle mount